

LD1250



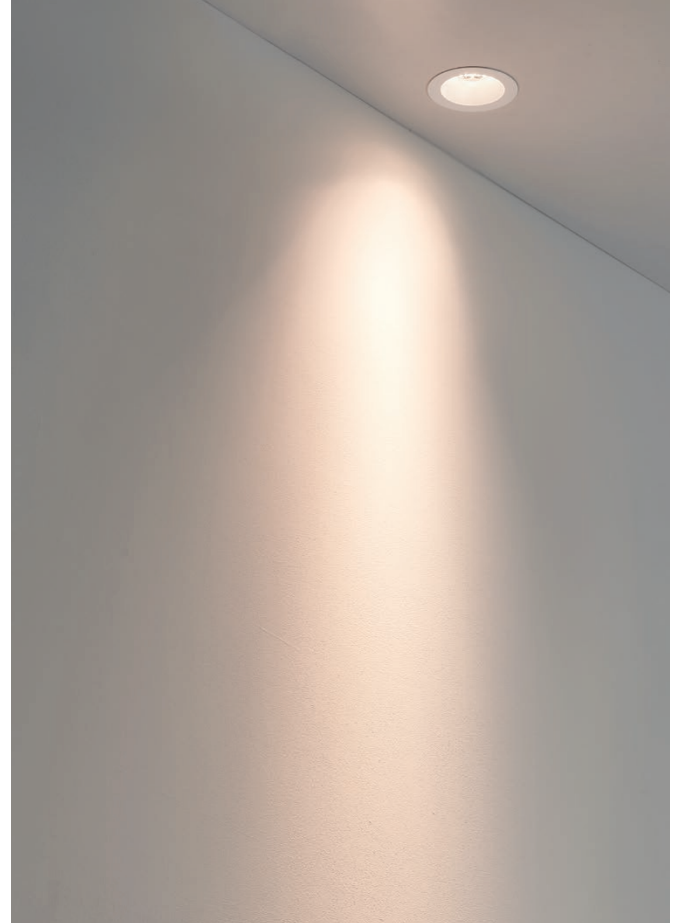
Fixed Low Glare LED Downlight

Data sheet - Page 1

LD1250 is a very powerful, low glare LED downlight. With its minimal bezel thickness and small diameter it is ideal for discreet wall washing, general downlighting and display lighting. A choice of beam angles are available with slightly frosted optics creating an even, focused beam of light, without compromising efficiency. At 350mA and 500mA a shorter heat sink is required making it useful for applications where ceiling void space is at a minimum, for example display lighting. At 700mA a larger heat sink is required.

Key Features

- LED and lens assembly recessed for reduced glare
- High output 6 LED cluster using 93 CRI LEDs
- Interchangeable optics
- A range of soft contoured beams
- Variable heat sink size depending on application and selected output
- High quality machined components
- Spring clip fixing
- Available with Switch, 0-10V, DMX, Dali or Mains dimmable drivers



Specification

Applications



Beam Angles

15°, 25°, 40°

LED type

6 x Cree XPG2

Colour temperature

2700K** / 3000K

5000K

	2700K** / 3000K			5000K		
	350mA	500mA	700mA	350mA	500mA	700mA
Current	350mA	500mA	700mA	350mA	500mA	700mA
LED power (Max)	7W (6.6W)*	10W (9.6W)*	14W (13.5W)*	7W (6.6W)*	10W (9.6W)*	14W (13.5W)*
CRI	93	93	93	75	75	75
Forward voltage (V) ₁₀₀	20V	20.7V	22V	20V	20.7V	22V
Delivered lumens** (L ₁₀₀)	533	728	972	648	884	1181
Lumens per watt	82	76	70	100	92	86

LED lifetime (to 70% lumen maintenance) 50,000hrs at an average ambient temperature of 35°C

Materials

Anodised aluminium, Stainless steel spring clips

Wiring

Terminal block on rear of fitting

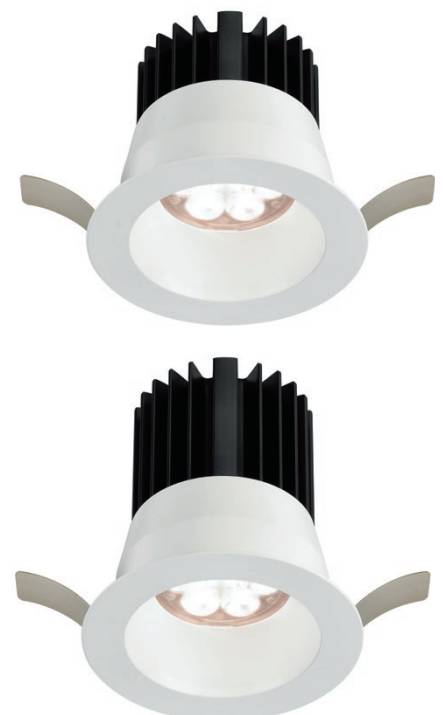
IP rating

IP40

*LED wattage includes losses associated with using an 85% efficient driver

**2700K lumen output is 12% lower than the 3000K figure listed

4000K lumen output is 14% higher than the 3000K figure listed (80 CRI)



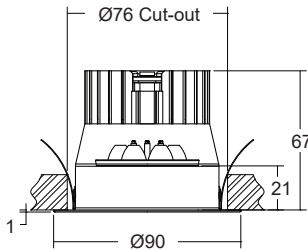
LD1250



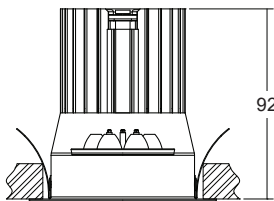
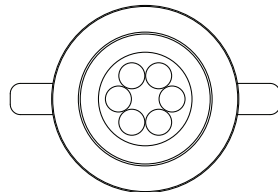
Fixed Low Glare LED Downlight

Data sheet - Page 2

Dimensions



LD1250-350
LD1250-500

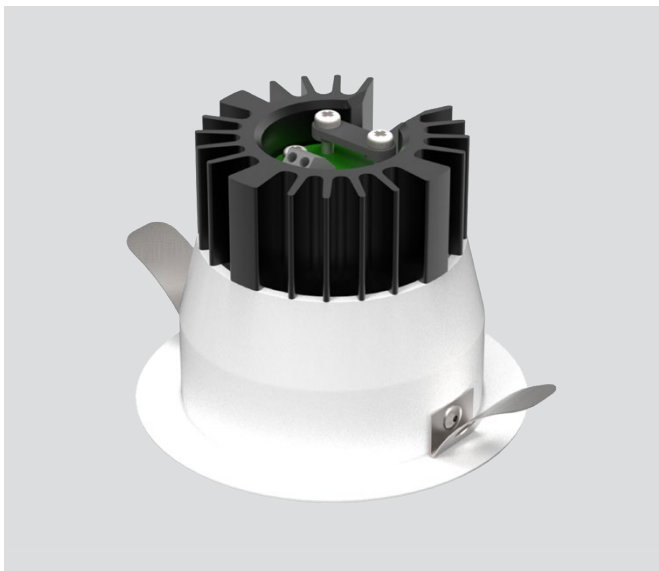


LD1250-700

Please note depth increase when using the 700mA version

Design

Built in terminal block and cable restraint



Photometrics

Photometric files are included in the design pack which can be downloaded from the LD1250 product page on the website.

Order Codes and Options

Product code	LED colour	Beam angle	Finish
LD1250 - 350 - 500 - 700	<input type="text"/>	<input type="text"/>	<input type="text"/>

Example: LD1270-350 / LW30 / MB / White

Product codes with output options

7W 350mA	LD1250-350
10W 500mA	LD1250-500
14W 700mA	LD1250-700

LED colour options

LED colour options	Suffix
Extra Warm White (2700K)	/LW27
Warm White (3000K)	/LW30
White (4000K) - on request	/LW40
Cool White (5000K)	/LW50

Beam / lens angle options

Beam / lens angle options	Suffix
15° narrow spot	/NB
25° medium	/MB
40° wide	/WB

Bezel finish options

Paint finish silver / black / white (RAL 9016) / RAL

Use with 350mA, 500mA, or 700mA constant current LED drivers

For our complete range of LED drivers please download the data sheet from the downloads section at www.lightgraphix.co.uk
Or please contact us for more information